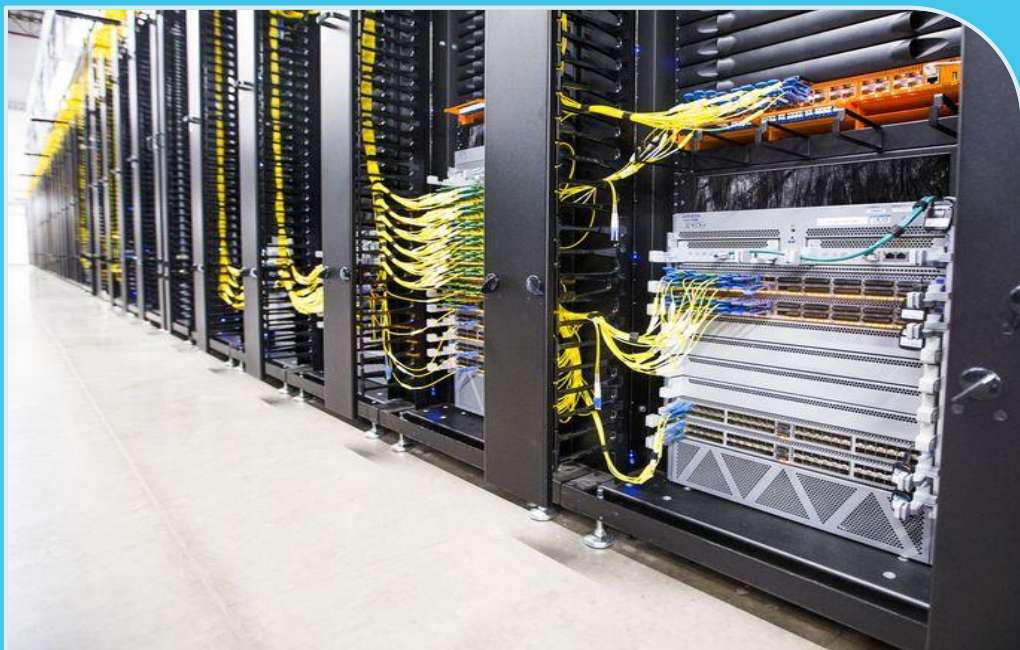


# Webscale Playbook: Apple

R&D splurge to continue, as further capex falloffs on cards with virus outbreak in China



Product Code: GNI-24022020-1

Contact Info: [arun@mtnconsulting.biz](mailto:arun@mtnconsulting.biz)

Author: Arun Menon

Date Published: 02/24/2020

# Agenda

<Click on section name to navigate>

01	Abstract	3
02	Operational Scale	4
03	Latest earnings takeaways	5
04	Revenue analysis	6
05	Capex & R&D: Spend analysis	7
06	Key spending priorities	8
07	Key technology relationships	9-10
08	Vendor market analysis	11
09	Data center footprint	12
10	Apple's network strategy	13
	Appendix 1	14
	Appendix 2	15

# Operational Scale

Apple's network of six self-owned data center sites along with co-location facilities manages massive amounts of data traffic for the company's currently active ~1.5B iOS-based devices

6



Operational data center locations *(as of Jan 2020)*

16%



iCloud's percent of total upstream mobile traffic in the Americas *(per Sandvine report – Feb 2019)*

1,349 kWh mn

Total energy use at Apple's data centers & co-location facilities *(Apple's 2019 Progress Report)*

## Apple's Webscale Network Infrastructure Metrics

~60 mn



Apple Music subscribers *(as of Jun 2019)*

~34 mn



Estimated Apple TV+ subscribers *(as of Dec 2019)*

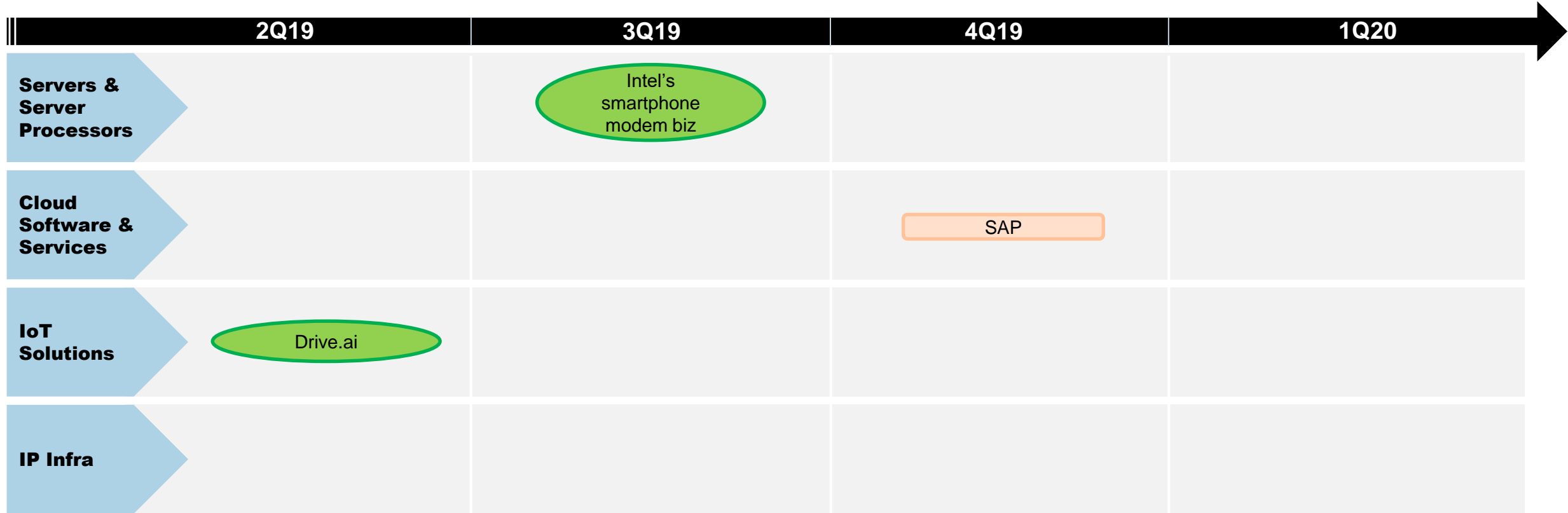
~1.5 bn



Active iOS devices installed base to sell an Apple service *(as of Jan 2020)*

# Apple's Key Technology Relationships\* in Networks (1/2)

Apple's big-ticket acquisition of Intel's smartphone modem business underscored the company's strong desire for chip independence



\*For a detailed review of Apple's technology relationships over a longer time series, refer to the latest edition of our [Webscale Network Supply Chain Analyzer](#)

^ Deals with vendors marked with caret (^) symbol are "Current" or "Ongoing" in nature